



Test Report

No.T51710190888TC

Date: FEB 22, 2017

Page 1 of 5

JIAN PLASTIC & METAL PRODUCTS LTD
NO.3-1, SOUTH GAOBU BLVD, GAOBU TOWN, DONGGUAN CITY,
GUANGDONG PROVINCE, CHINA, ZIP CODE:523278

The following samples were submitted and identified by/on behalf of the client as:

SPIN CAST ZINC ALLOY

Buyer : WORLD WIDE
Manufacturer : CHINA
Country of Origin : MADE IN CHINA
Country of Destination : WORLD WIDE
Requested Age Grading : 3+
Sample Receiving Date : FEB 17, 2017
Testing Period : FEB 17, 2017 TO FEB 22, 2017



SGS-CSTC Testing Services Co., Ltd.
Shenzhen Branch Testing Center Hardlines

Unless otherwise agreed in writing, this document is issued by the Company subject to its General Conditions of Service printed overleaf, available on request or accessible at <http://www.sgs.com/en/Terms-and-Conditions.aspx> and, for electronic format documents, subject to Terms and Conditions for Electronic Documents at <http://www.sgs.com/en/Terms-and-Conditions/Terms-e-Documents.aspx>. Attention is drawn to the limitation of liability, indemnification and jurisdiction issues defined therein. Any holder of this document is advised that information contained hereon reflects the Company's findings at the time of its intervention only and within the limits of Client's instructions, if any. The Company's sole responsibility is to its Client and this document does not exonerate parties to a transaction from exercising all their rights and obligations under the transaction documents. This document cannot be reproduced except in full, without prior written approval of the Company. Any unauthorized alteration, forgery or falsification of the content or appearance of this document is unlawful and offenders may be prosecuted to the fullest extent of the law. Unless otherwise stated the results shown in this test report refer only to the sample(s) tested and such sample(s) are retained for 30 days only.

Attention: To check the authenticity of testing / inspection report & certificate, please contact us at telephone: (86-755) 8307 1443, or email: CN.Doccheck@sgs.com

SGS Bldg, No. 4, Jianghao Industrial Park, No. 430, Jihua Road, Banlan, Longgang District, Shenzhen, China 518129 t (86-755) 25328888 f (86-755) 83106190 www.sgsgroup.com.cn
中国·深圳·龙岗区坂田吉华路430号江灏工业园4栋SGS大楼 邮编: 518129 t (86-755) 25328888 f (86-755) 83106190 e sgs.china@sgs.com



Test Report

No.T51710190888TC

Date: FEB 22, 2017

Page 2 of 5

Test Requested		Conclusion
1.	CPSIA section 101 - Total Lead content	--
	CPSIA section 101(a) (2) – Lead in accessible substrate materials (Including Children’s Metal Jewelry)	PASS
2.	US California Proposition 65 (County of Alameda Court Case No. RG-10-514803 [Consolidated with Case No. RG 10-545680 and RG 10-545687]) – Cadmium Content	PASS
	Client’s Requirement – Cadmium Content	PASS

***** FOR FURTHER DETAILS, PLEASE REFER TO THE FOLLOWING PAGE(S) *****

Signed for and on behalf of
SGS-CSTC Standards Technical
Services Co., Ltd. Shenzhen Branch Testing Center

Feng Shaohong, Jessica
Lab Manager



SGS-CSTC Standards Technical Services Co., Ltd.
Shenzhen Branch Testing Center Hardlines

Unless otherwise agreed in writing, this document is issued by the Company subject to its General Conditions of Service printed overleaf, available on request or accessible at <http://www.sgs.com/en/Terms-and-Conditions.aspx> and, for electronic format documents, subject to Terms and Conditions for Electronic Documents at <http://www.sgs.com/en/Terms-and-Conditions/Terms-e-Documents.aspx>. Attention is drawn to the limitation of liability, indemnification and jurisdiction issues defined therein. Any holder of this document is advised that information contained hereon reflects the Company’s findings at the time of its intervention only and within the limits of Client’s instructions, if any. The Company’s sole responsibility is to its Client and this document does not exonerate parties to a transaction from exercising all their rights and obligations under the transaction documents. This document cannot be reproduced except in full, without prior written approval of the Company. Any unauthorized alteration, forgery or falsification of the content or appearance of this document is unlawful and offenders may be prosecuted to the fullest extent of the law. Unless otherwise stated the results shown in this test report refer only to the sample(s) tested and such sample(s) are retained for 30 days only.

Attention: To check the authenticity of testing / inspection report & certificate, please contact us at telephone: (86-755) 8307 1443, or email: CN.Doccheck@sgs.com

SGS Bldg, No. 4, Jianghao Industrial Park, No. 430, Jihua Road, Bantian, Longgang District, Shenzhen, China 518129 t (86-755) 25328888 f (86-755) 83106190 www.sgs.com.cn
中国·深圳·龙岗区坂田吉华路430号江灏工业园4栋SGS大楼 邮编: 518129 t (86-755) 25328888 f (86-755) 83106190 e sgs.china@sgs.com



Test Report

No.T51710190888TC

Date: FEB 22, 2017

Page 3 of 5

Results:

1. CPSIA - Lead in Accessible Substrate Materials

Method (metal materials): With reference to CPSC-CH-E1001-08.3 - Standard Operating Procedure for Determining Total Lead (Pb) in Children's Metal Products (Including Children's Metal Jewelry)

Test Item(s)	Lead (Pb)		
Permissible Limit ** (ppm)	100		
Specimen Description	Alias No.	Tracing No.	Result(s) (ppm)
1. Silvery metal part	1	1	ND

** Permissible Limit applies to a children's product manufactured after 14 August 2011 (Public Law 110-314 (Consumer Product Safety Improvement Act of 2008) and its Amendments Public Law 112-28)

- Note:
- ppm = parts per million
 - ND = Not Detected (lower than MDL)
 - MDL = Method Detection Limit = 10 ppm
 - 1% = 10000 mg/kg = 10000 ppm



SGS-CSTC Testing Technology Co., Ltd.
Shenzhen Branch Testing Center Hardlines

Unless otherwise agreed in writing, this document is issued by the Company subject to its General Conditions of Service printed overleaf, available on request or accessible at <http://www.sgs.com/en/Terms-and-Conditions.aspx> and, for electronic format documents, subject to Terms and Conditions for Electronic Documents at <http://www.sgs.com/en/Terms-and-Conditions/Terms-e-Documents.aspx>. Attention is drawn to the limitation of liability, indemnification and jurisdiction issues defined therein. Any holder of this document is advised that information contained hereon reflects the Company's findings at the time of its intervention only and within the limits of Client's instructions, if any. The Company's sole responsibility is to its Client and this document does not exonerate parties to a transaction from exercising all their rights and obligations under the transaction documents. This document cannot be reproduced except in full, without prior written approval of the Company. Any unauthorized alteration, forgery or falsification of the content or appearance of this document is unlawful and offenders may be prosecuted to the fullest extent of the law. Unless otherwise stated the results shown in this test report refer only to the sample(s) tested and such sample(s) are retained for 30 days only.

Attention: To check the authenticity of testing / inspection report & certificate, please contact us at telephone: (86-755) 8307 1443, or email: CN.Doccheck@sgs.com

SGS Bldg, No. 4, Jianghao Industrial Park, No. 430, Jihua Road, Bantian, Longgang District, Shenzhen, China 518129 t (86-755) 25328888 f (86-755) 83106190 www.sgs.com.cn
中国·深圳·龙岗区坂田吉华路430号江灏工业园4栋SGS大楼 邮编: 518129 t (86-755) 25328888 f (86-755) 83106190 e sgs.china@sgs.com



Test Report

No.T51710190888TC

Date: FEB 22, 2017

Page 4 of 5

2. US California Proposition 65 – Cadmium Content

Method: Acid Digestion

Analysis was performed by Inductively Coupled Plasma Optical Emission Spectrometer (ICP-OES)

Test Item(s)			Cadmium (Cd)
Specimen Description	Alias No.	Tracing No.	Result(s) (ppm)
1. Silvery metal part	2	1	ND

- Note:
- ppm = parts per million
 - ND = Not Detected (lower than MDL)
 - MDL = Method Detection Limit = 5 ppm

Summary of permissible limits of Cadmium requirement(s):

Requirement(s)	Permissible Limit of Cadmium (ppm)	Effective Date
California Proposition 65 (County of Alameda Court Case No. RG-10-514803 [Consolidated with Case No. RG 10-545680 and RG 10-545687])	300	Current
Client's Limit	75	Current



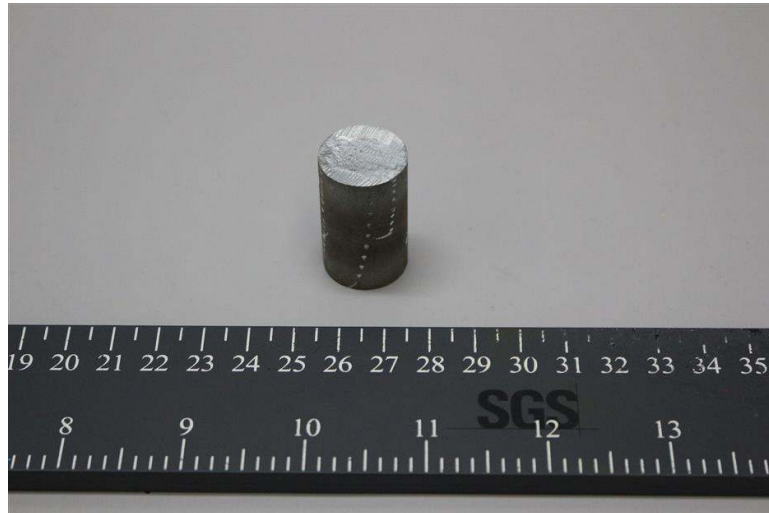
Unless otherwise agreed in writing, this document is issued by the Company subject to its General Conditions of Service printed overleaf, available on request or accessible at <http://www.sgs.com/en/Terms-and-Conditions.aspx> and, for electronic format documents, subject to Terms and Conditions for Electronic Documents at <http://www.sgs.com/en/Terms-and-Conditions/Terms-e-Documents.aspx>. Attention is drawn to the limitation of liability, indemnification and jurisdiction issues defined therein. Any holder of this document is advised that information contained hereon reflects the Company's findings at the time of its intervention only and within the limits of Client's instructions, if any. The Company's sole responsibility is to its Client and this document does not exonerate parties to a transaction from exercising all their rights and obligations under the transaction documents. This document cannot be reproduced except in full, without prior written approval of the Company. Any unauthorized alteration, forgery or falsification of the content or appearance of this document is unlawful and offenders may be prosecuted to the fullest extent of the law. Unless otherwise stated the results shown in this test report refer only to the sample(s) tested and such sample(s) are retained for 30 days only.

Attention: To check the authenticity of testing / inspection report & certificate, please contact us at telephone: (86-755) 8307 1443, or email: CN.Doccheck@sgs.com

SGS-CSTC Testing Technology Co., Ltd.
Shenzhen Branch Testing Center Hardlines

SGS Bldg, No. 4, Jilangao Industrial Park, No. 430, Jilhua Road, Banlan, Longgang District, Shenzhen, China 518129 t (86-755) 25328888 f (86-755) 83106190 www.sgsgroup.com.cn
中国·深圳·龙岗区坂田吉华路430号江灏工业园4栋SGS大楼 邮编: 518129 t (86-755) 25328888 f (86-755) 83106190 e sgs.china@sgs.com

Sample Photo:



SGS authenticate the photo on original report only

*** End of Report ***



Unless otherwise agreed in writing, this document is issued by the Company subject to its General Conditions of Service printed overleaf, available on request or accessible at <http://www.sgs.com/en/Terms-and-Conditions.aspx> and, for electronic format documents, subject to Terms and Conditions for Electronic Documents at <http://www.sgs.com/en/Terms-and-Conditions/Terms-e-Document.aspx>. Attention is drawn to the limitation of liability, indemnification and jurisdiction issues defined therein. Any holder of this document is advised that information contained hereon reflects the Company's findings at the time of its intervention only and within the limits of Client's instructions, if any. The Company's sole responsibility is to its Client and this document does not exonerate parties to a transaction from exercising all their rights and obligations under the transaction documents. This document cannot be reproduced except in full, without prior written approval of the Company. Any unauthorized alteration, forgery or falsification of the content or appearance of this document is unlawful and offenders may be prosecuted to the fullest extent of the law. Unless otherwise stated the results shown in this test report refer only to the sample(s) tested and such sample(s) are retained for 30 days only.

Attention: To check the authenticity of testing / inspection report & certificate, please contact us at telephone: (86-755) 8307 1443, or email: CN.Doccheck@sgs.com

SGS-CSTC 检验检测专用章
Inspection & Testing Services
Shenzhen Branch Testing Center Hardlines

SGS Bldg, No. 4, Jilanghao Industrial Park, No. 430, Jihua Road, Bantian, Longgang District, Shenzhen, China 518129 t (86-755) 25328888 f (86-755) 83106190 www.sgs.com.cn
中国·深圳·龙岗区坂田吉华路430号江灏工业园4栋SGS大楼 邮编: 518129 t (86-755) 25328888 f (86-755) 83106190 e sgs.china@sgs.com