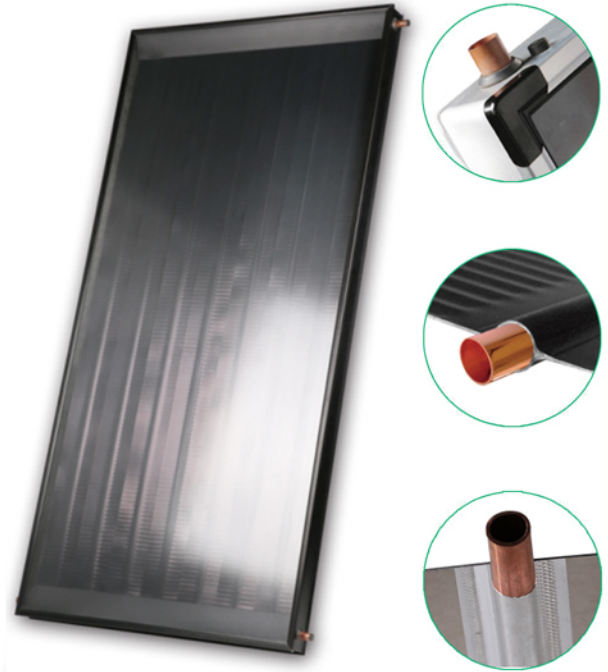
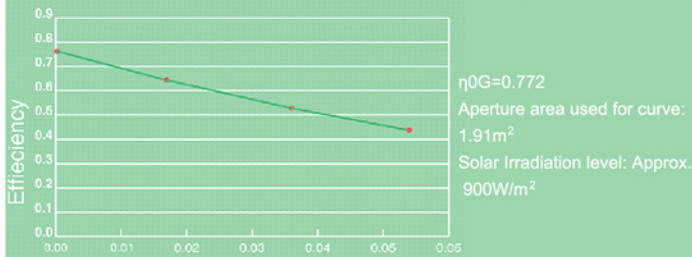


Feature & Advantage:

- Anodic oxidation aluminum strip and copper flow channel by packaged ultrasonic welding or fusion bonding, 360° heat exchange for more heat transfer
- No welding points on coating absorber and no damage on riser tubes
- The special bending extrusion aluminum frame provides a strong construction with perfect waterproofness
- Anti-corrosive high quality Aluzinc or Aluminium plate back sheet is optional
- Low-iron tempered textured glass provides excellent strength and anti-reflective surface with 92% transmittance
- Casing frame is treated by anodization for anti-corrosion
- Full aluminum foil packaged fiber glass insulation to prevent heat loss
- Have passed EN12975-1, 2, ISO9806-1 tests



Instantaneous Efficiency Curve



* Test result from certified third-party laboratory *



| MODEL NO. & SPECIFICATION | | STE-C-AO-F20 | STE-C-AO-F25 | STE-C-AO-P20 | STE-C-AO-P25 |
|---------------------------|---------------------------------|--|--------------|-----------------------------|--------------|
| Overall Data | Dimensions (mm) | 2000x1000x80 | 2000x1250x80 | 2000x1000x80 | 2000x1250x80 |
| | Overall area (m ²) | 2 | 2.5 | 2 | 2.5 |
| | Aperture area (m ²) | 1.9 | 2.35 | 1.9 | 2.35 |
| Absorber | Header tube dimension(mm) | Φ19 / Φ22 / Φ25 * 0.6 / 0.91mm | | | |
| | Riser tube dimension(mm) | Φ10 / Φ8*0.6mm*8 pcs or 10 pcs | | | |
| | Max. working pressure | 0.8Mpa | | | |
| | Absorber coating | Anodic Oxidation | | | |
| | Absorber material | Aluminium Fusion Bonding Strip | | Aluminium Strip | |
| | Welding way | Fusion Bonding | | Packaged Ultrasonic Welding | |
| | Absorber thickness | 0.5 ~ 0.6mm | | 0.3mm | |
| | Absorption | 95% | | | |
| Emittance | <15% | | | | |
| Insulation | Fiber glass | Fiber Glass of 24kg/m ³ Density / Aluminum Foil Full Packaged | | | |
| Glazing | Transmittance | 92% | | | |
| | Material | Low-iron Tempered Textured Glass / 3.2mm Thickness | | | |
| Casing | Frame | Special Bending Design Extrusion Aluminium Frame | | | |
| | Back plate | Aluzinc or Aluminium Plate | | | |
| | Frame color | Silver/Bronze/ Black | | | |
| | Sealing gasket | Silicone glue | | | |